

BOUNDARY MAPS OF MINERS PARK METROPOLITAN DISTRICT NOS. 1 & 2

**LOCATED IN THE SOUTHWEST QUARTER OF SECTION 31,
TOWNSHIP 2 NORTH, RANGE 67 WEST OF THE 6TH PRINCIPAL MERIDIAN,
TOWN OF FREDERICK, COUNTY OF WELD, STATE OF COLORADO**

LEGEND

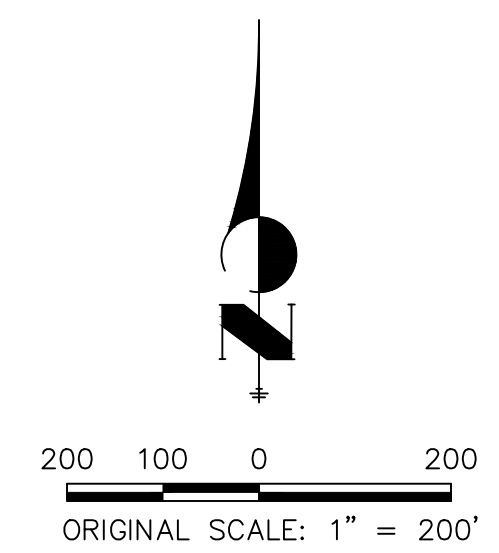
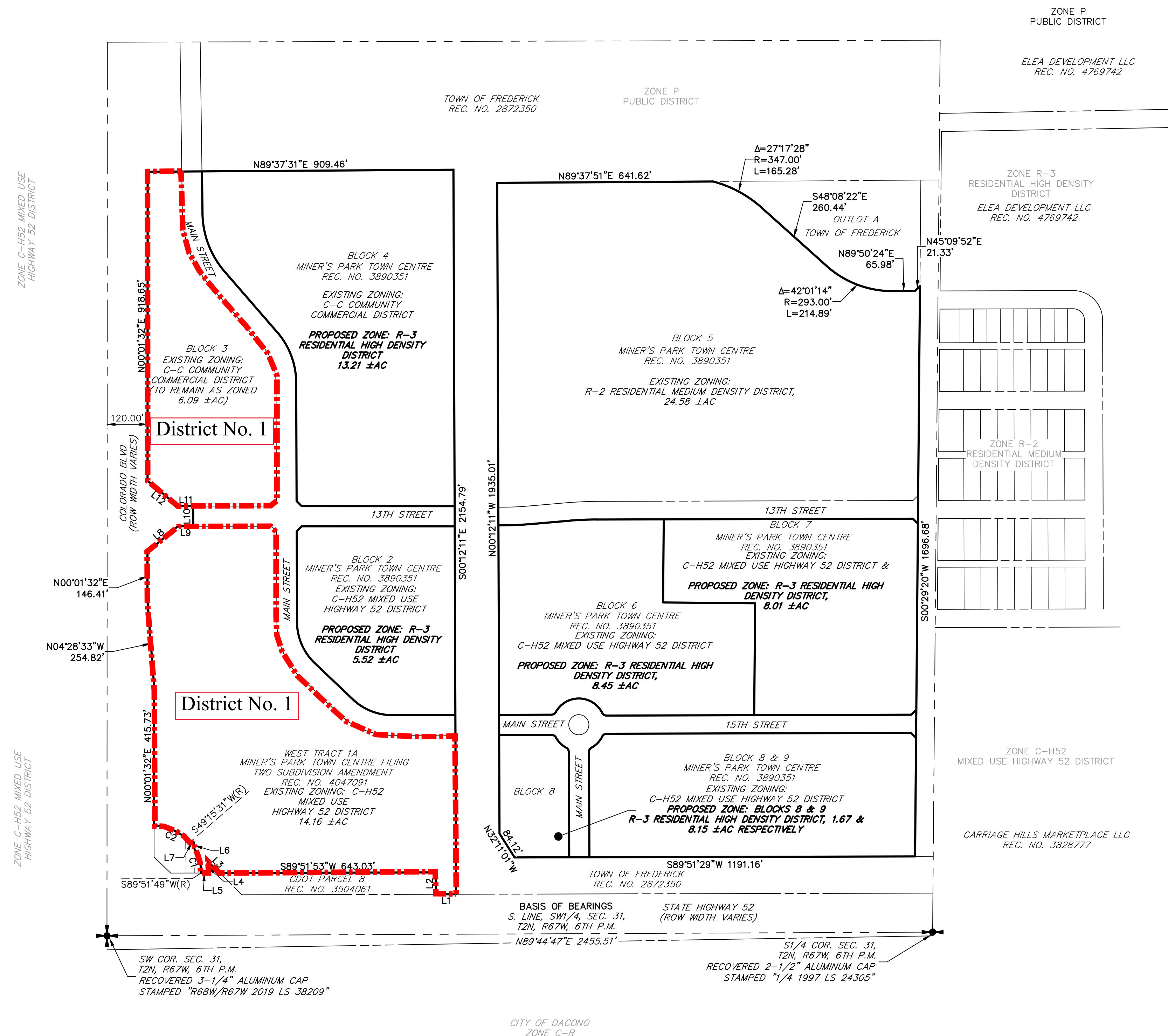
	EXISTING RIGHT-OF-WAY
	EXISTING PROPERTY LINE
	BOUNDARY LINE
(R)	RADIAL BEARING
	DISTRICT NO. 1 BOUNDARY

LINE TABLE

LINE	BEARING	DISTANCE
L1	S89°51'53"W	59.98'
L2	N00°12'27"W	65.00'
L3	N45°41'44"W	49.35'
L4	S00°45'39"E	34.55'
L5	S89°51'53"W	19.90'
L6	N00°45'39"W	17.53'
L7	S89°51'53"W	12.62'
L8	N50°10'21"E	117.90'
L9	S89°58'27"E	45.82'
L10	N00°55'12"W	60.01'
L11	N89°58'27"W	44.83'
L12	N50°07'15"W	117.90'

CURVE TABLE

CURVE	DELTA	RADIUS	LENGTH
C1	31°42'39"	140.00'	77.48'
C2	49°13'59"	140.00'	120.30'



LEGEND

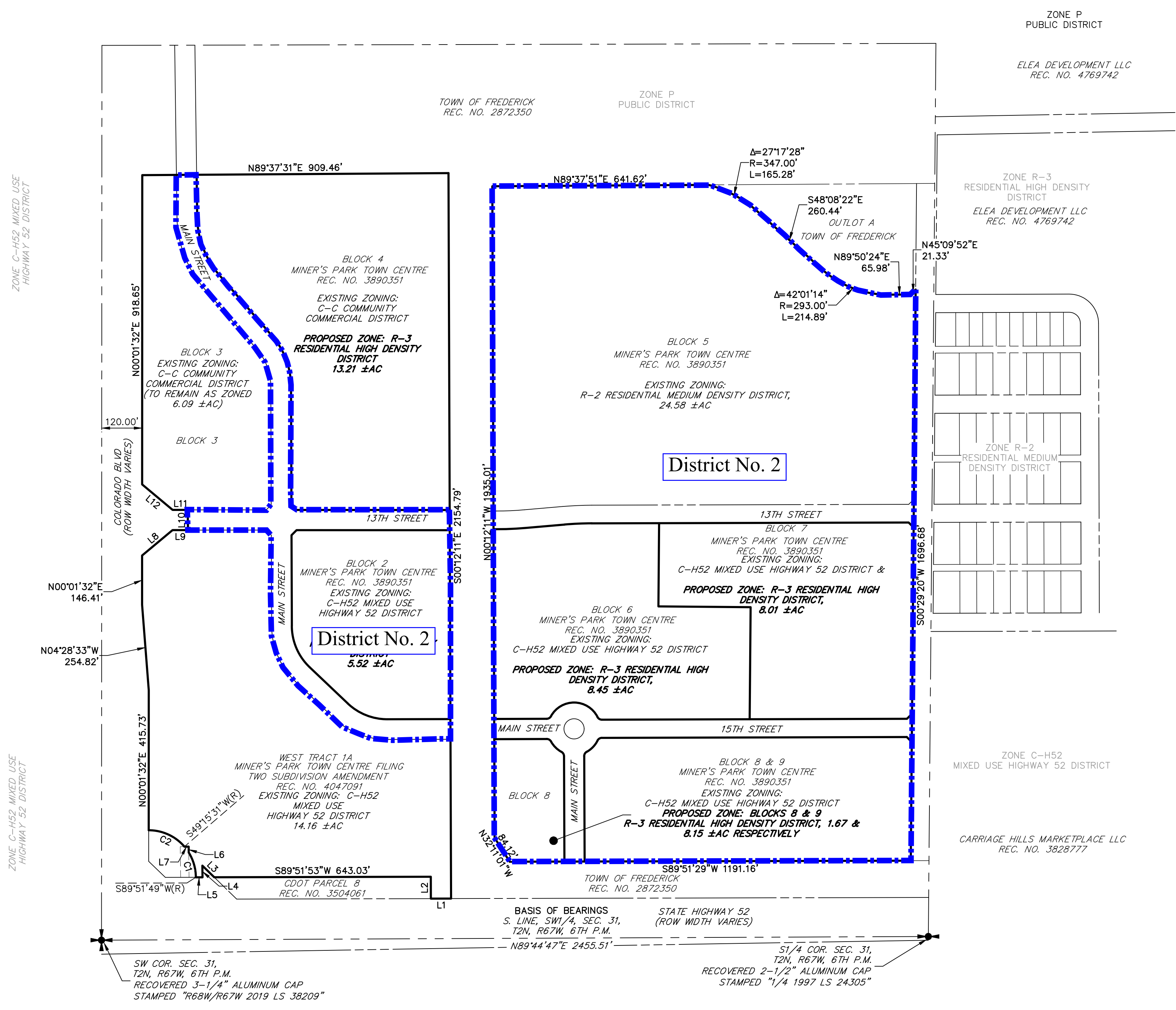
	EXISTING RIGHT-OF-WAY
	EXISTING PROPERTY LINE
	BOUNDARY LINE
(R)	RADIAL BEARING
	DISTRICT NO. 2 BOUNDARY

LINE TABLE

LINE	BEARING	DISTANCE
L1	S89°51'53"W	59.98'
L2	N00°12'27"W	65.00'
L3	N45°41'44"W	49.35'
L4	S00°45'39"E	34.55'
L5	S89°51'53"W	19.90'
L6	N00°45'39"W	17.53'
L7	S89°51'53"W	12.62'
L8	N50°10'21"E	117.90'
L9	S89°58'27"E	45.82'
L10	N00°55'12"W	60.01'
L11	N89°58'27"W	44.83'
L12	N50°07'15"W	117.90'

CURVE TABLE

CURVE	DELTA	RADIUS	LENGTH
C1	31°42'39"	140.00'	77.48'
C2	49°13'59"	140.00'	120.30'



SW COR. SEC. 31,
T2N, R67W, 6TH P.M.
RECOVERED 3-1/4" ALUMINUM CAP
STAMPED "R68W/R67W 2019 LS 38209"

STATE HIGHWAY 52
(ROW WIDTH VARIES)
S. LINE, SW1/4, SEC. 31,
T2N, R67W, 6TH P.M.
N89°44'47"E 2455.51'

ST/4 COR. SEC. 31,
T2N, R67W, 6TH P.M.
RECOVERED 2-1/2" ALUMINUM CAP
STAMPED "1/4 1997 LS 24305"

CITY OF DACONO
ZONE C-R